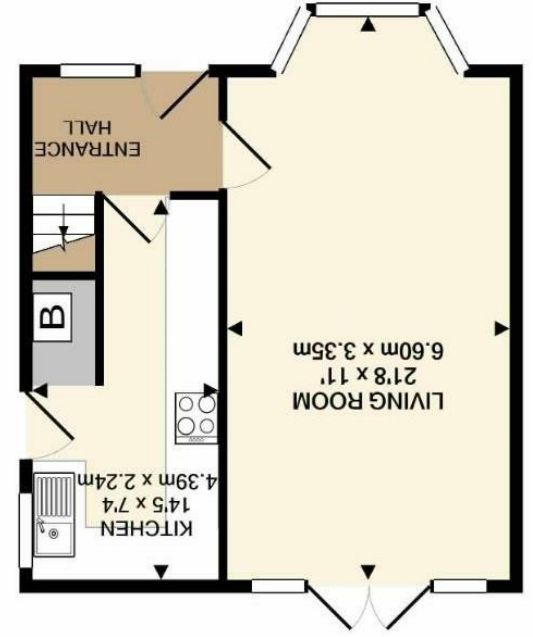
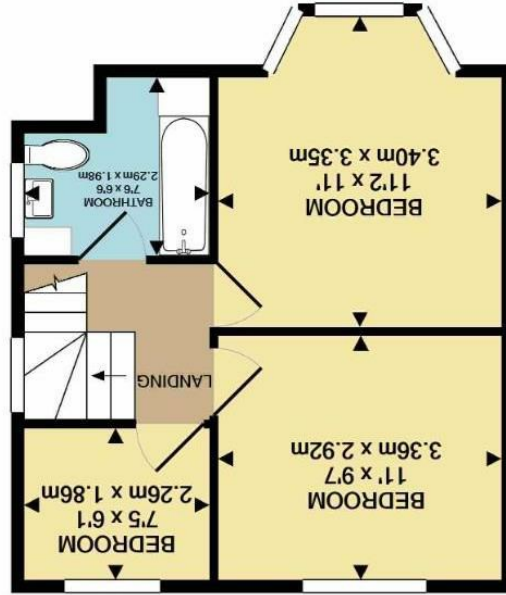


Fishwick nor the vendor or lessor accept any responsibility in respect of these particulars, which are not intended to be statements or representations of fact and any intending purchaser or lessee must satisfy himself by inspection or otherwise as to the correctness of each of the statements contained in these particulars. Any floorplans on this brochure are for illustrative purposes only and are not necessarily to scale.

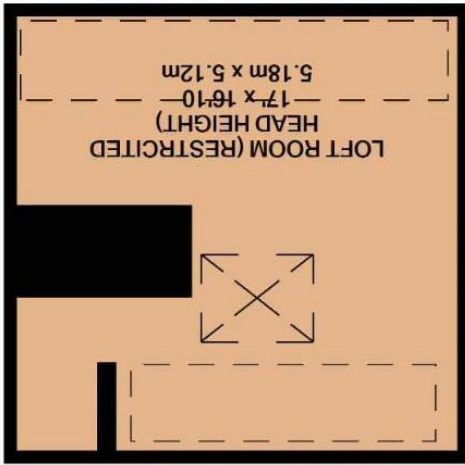
GROUND FLOOR  
APPROX. FLOOR  
AREA 369 SQ.FT.  
(34.3 SQ.M.)



1ST FLOOR  
APPROX. FLOOR  
AREA 363 SQ.FT.  
(33.7 SQ.M.)



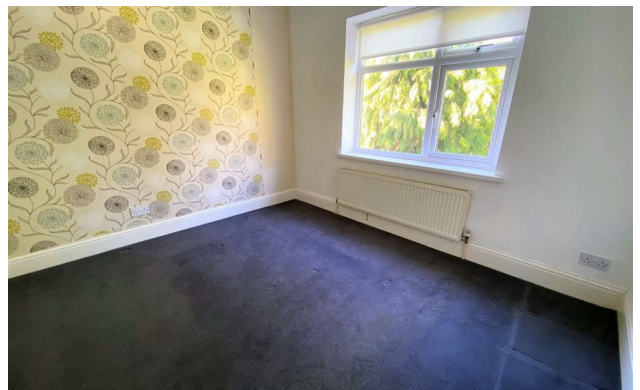
LOFT ROOM  
APPROX. FLOOR  
AREA 259 SQ.FT.  
(24.1 SQ.M.)  
TOTAL APPROX. FLOOR AREA 991 SQ.FT. (92.1 SQ.M.)  
Measurements are approximate. Not to scale. Illustrative purposes only.  
Made with Metropix ©2022





Highcroft Avenue, West Didsbury M20 2YN

£350,000

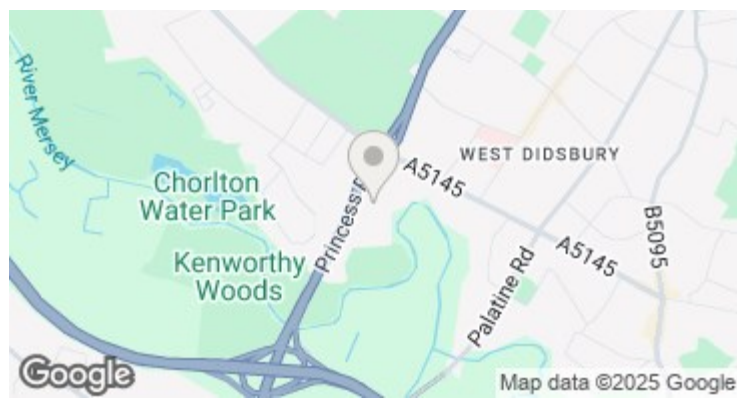


**The Property**

A traditional three bedroom semi detached property, ready to move into with no onward chain, located towards the head of a small cul-de-sac in West Didsbury with a useful loft room, enclosed garden and separate garage. Warmed by gas central heating and further complemented by uPVC double glazing, the living space in outline comprises:- Entrance hall, living room with bay window and French doors opening to the rear garden, fitted kitchen with a range of units, three bedrooms and bathroom with white suite. The property enjoys an excellent cul-de-sac location, being close to walks along The River Mersey, Burton Road with its array of restaurants & shops and the motorway network, giving easy access to Manchester City Centre, Manchester Airport and beyond.

**Directions**

M20 2YN



- Traditional semi detached
- Three bedrooms
- Living room with bay window
- Fitted kitchen & bathroom
- Useful loft room
- Gas central heating
- UPVC double glazing
- Gardens & detached garage
- Cup-de-sac position
- West Didsbury location

Postcode - M20 2YN

EPC Rating - D

Floor Area - 991.00 sq ft

Local Authority - Manchester City Council

Council Tax - C

